

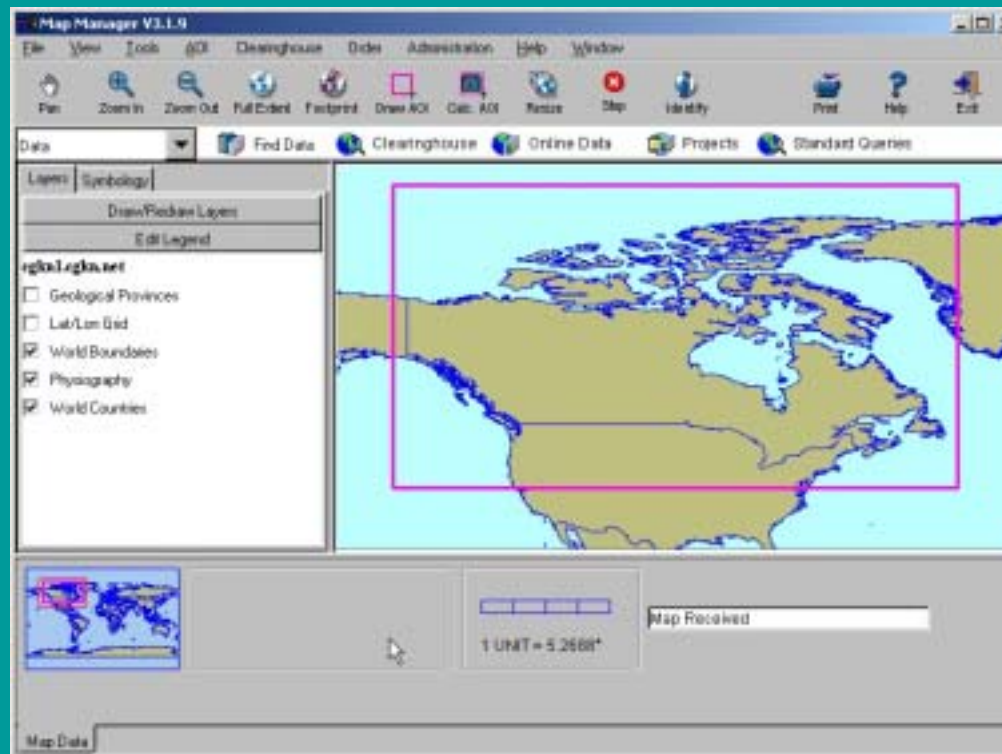
# **Canadian Geoscience Knowledge Network**

## **Data Catalogue Redesign**

**James Rupert**

# Current design

## ◆ Compusult Web Enterprise Suite



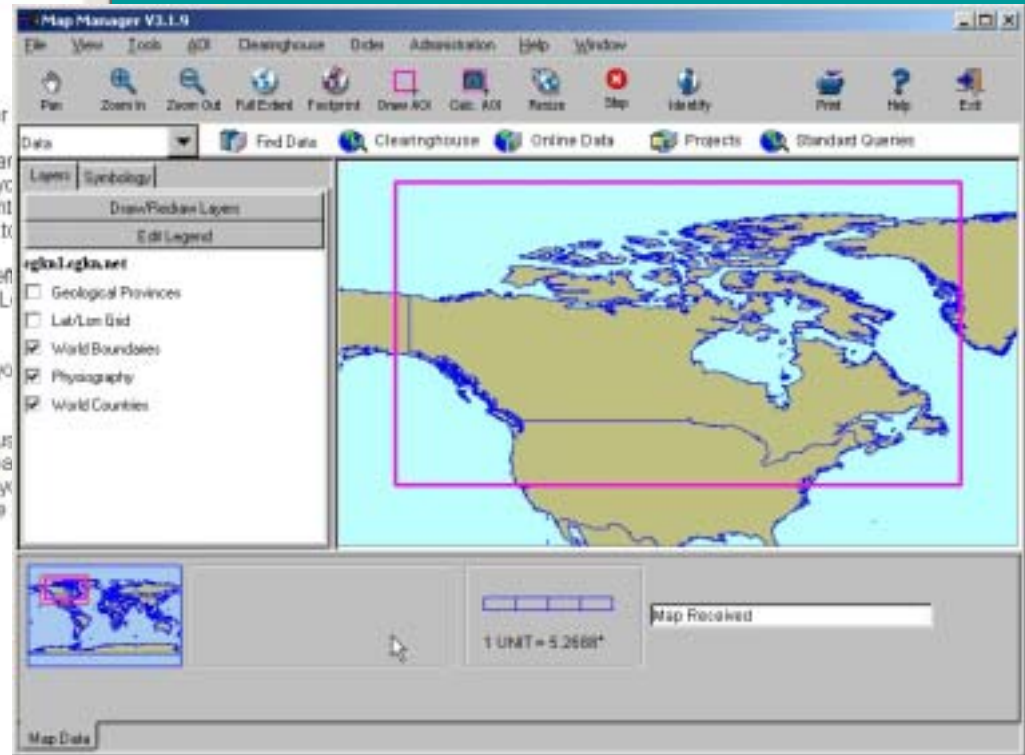
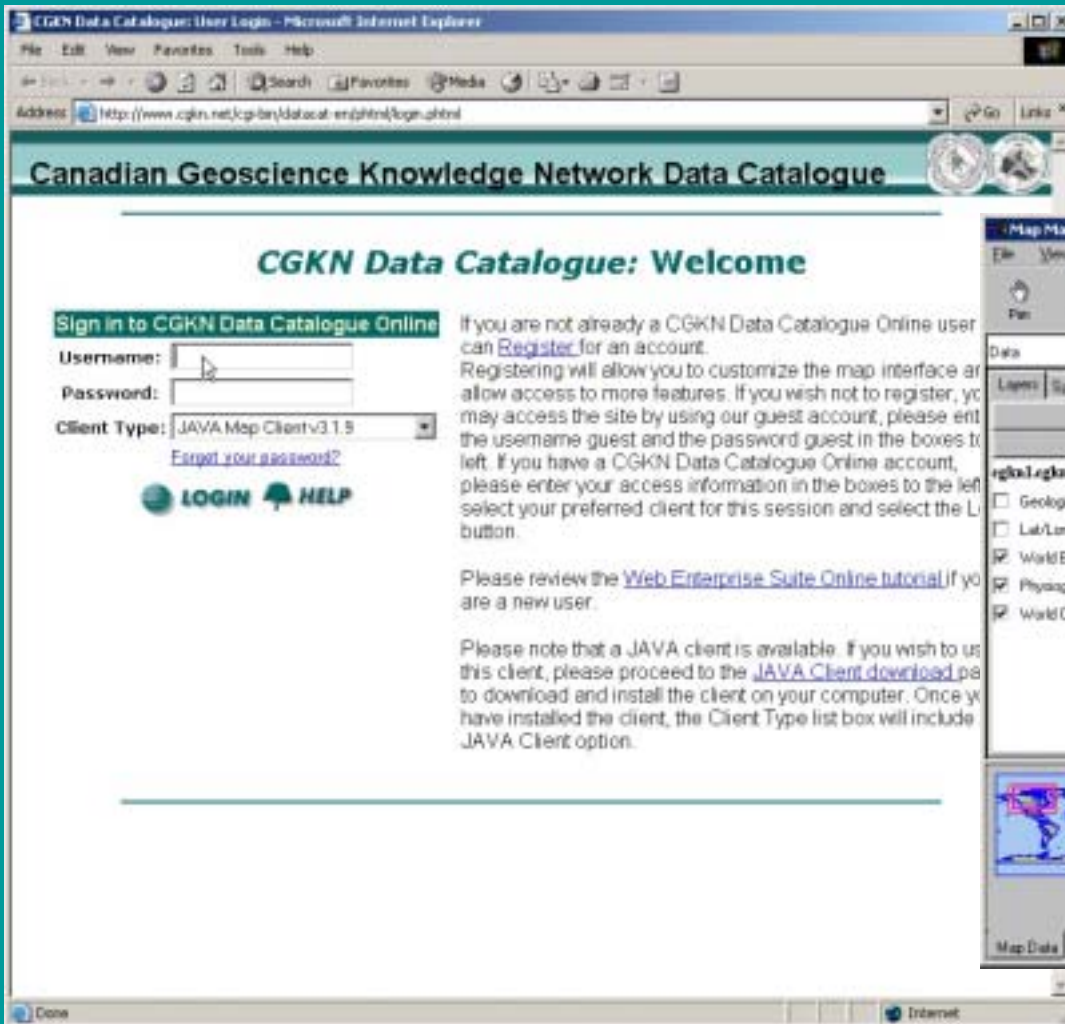
## **Current design - advantages**

- ◆ **Commercial off the shelf software**
- ◆ **Integrated metadata & Web Mapping Services**
- ◆ **Software support**

## **Current design - disadvantages**

- ◆ **Difficult to customize**
- ◆ **Login required**
- ◆ **Users found interface difficult to use**
  - **Integrated metadata & Web Mapping Services**
  - **Map based**
- ◆ **Software support could be slow to respond**
- ◆ **System requirements: Windows, Solaris, Oracle**

# Current design - disadvantages

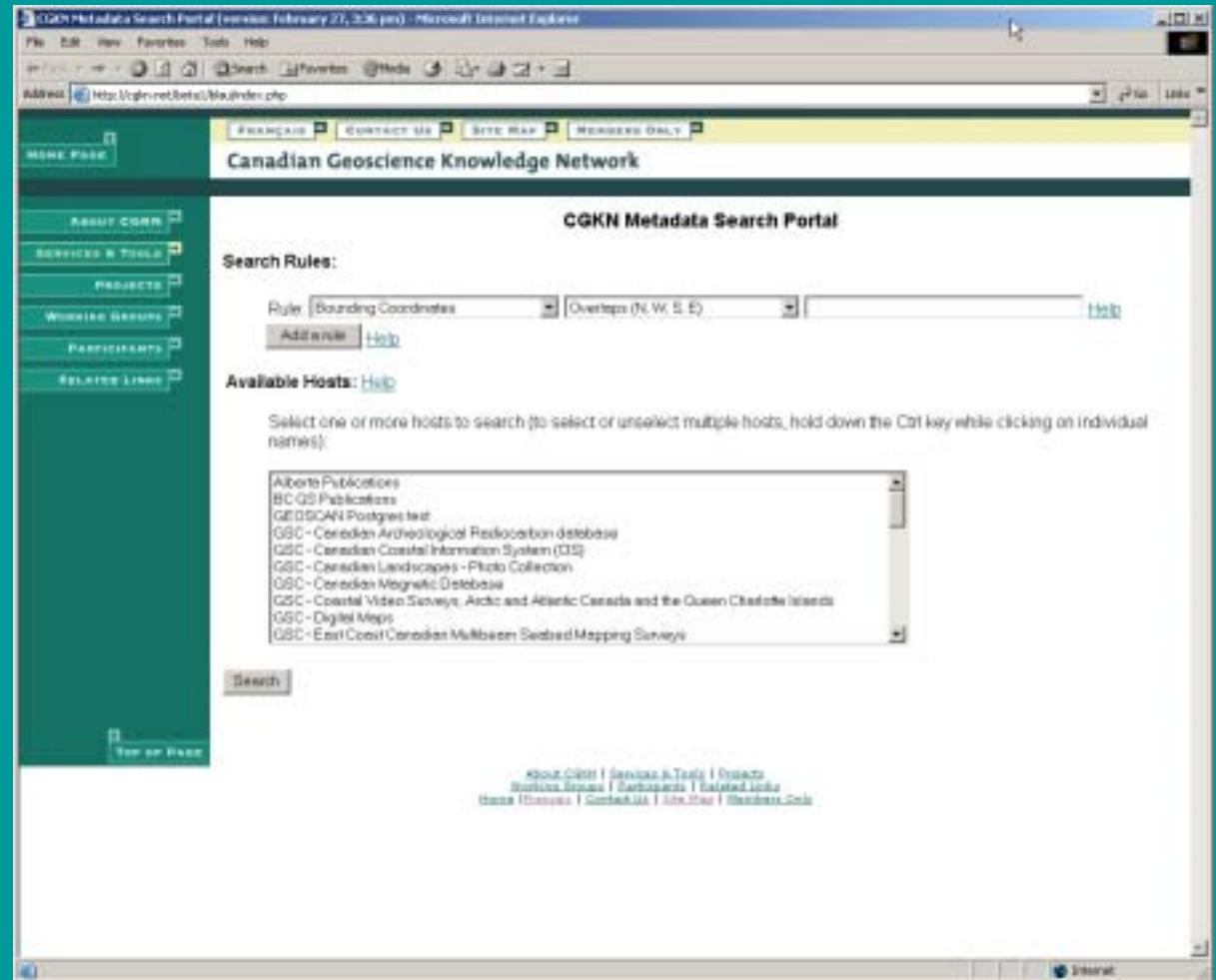


## **Design in development**

- ◆ **No login required**
- ◆ **Easier to use???**
- ◆ **Initial interface is text based**
- ◆ **Based on open source software**
- ◆ **System requirements: OS independent, only one system required**
- ◆ **Collection list harvested from GeoConnections**

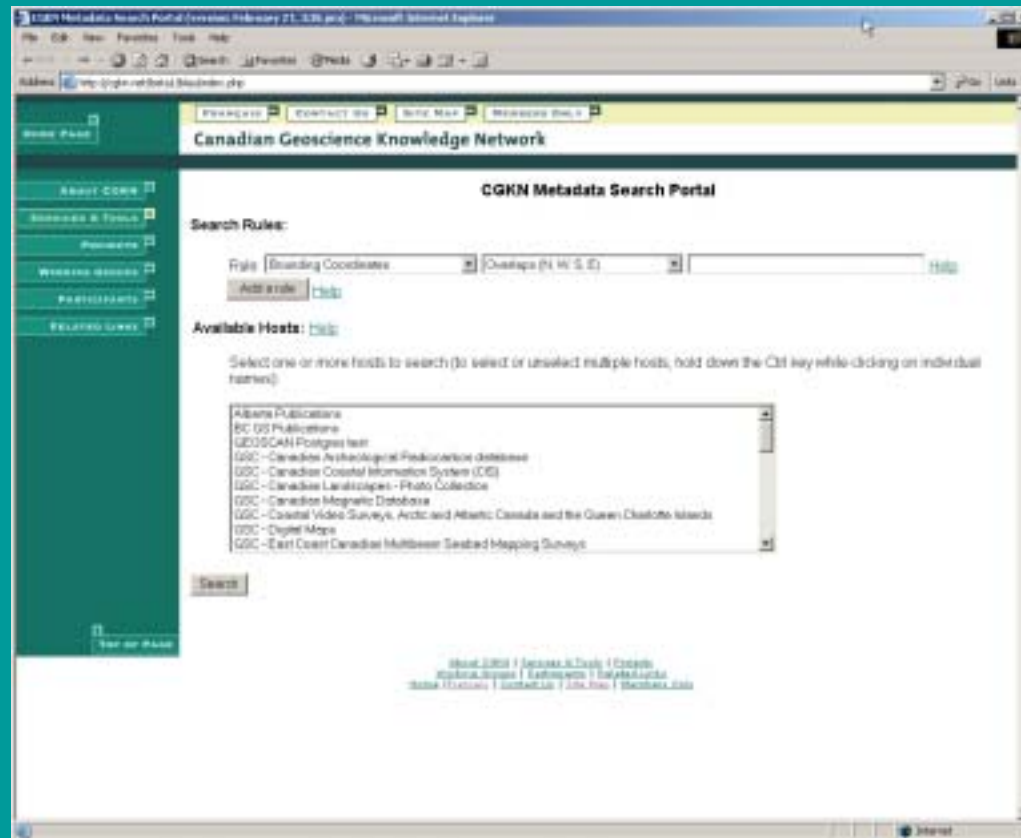
# Design in development – technology

- ◆ PHP
- ◆ Perl
- ◆ Postgres
- ◆ YAZ toolkit
- ◆ Mapserver (coming)



# Design in development

## ◆ Demo



# Design in development– to come

- ◆ **Web services to populate bounding coordinates**
  - **NTS sheet number**
  - **Location name (Gazetteer)**
  - **Postal Code**
  
- ◆ **Display search results on a map**

